

Smart sensors

Patented technology for comprehensive documentation of testing

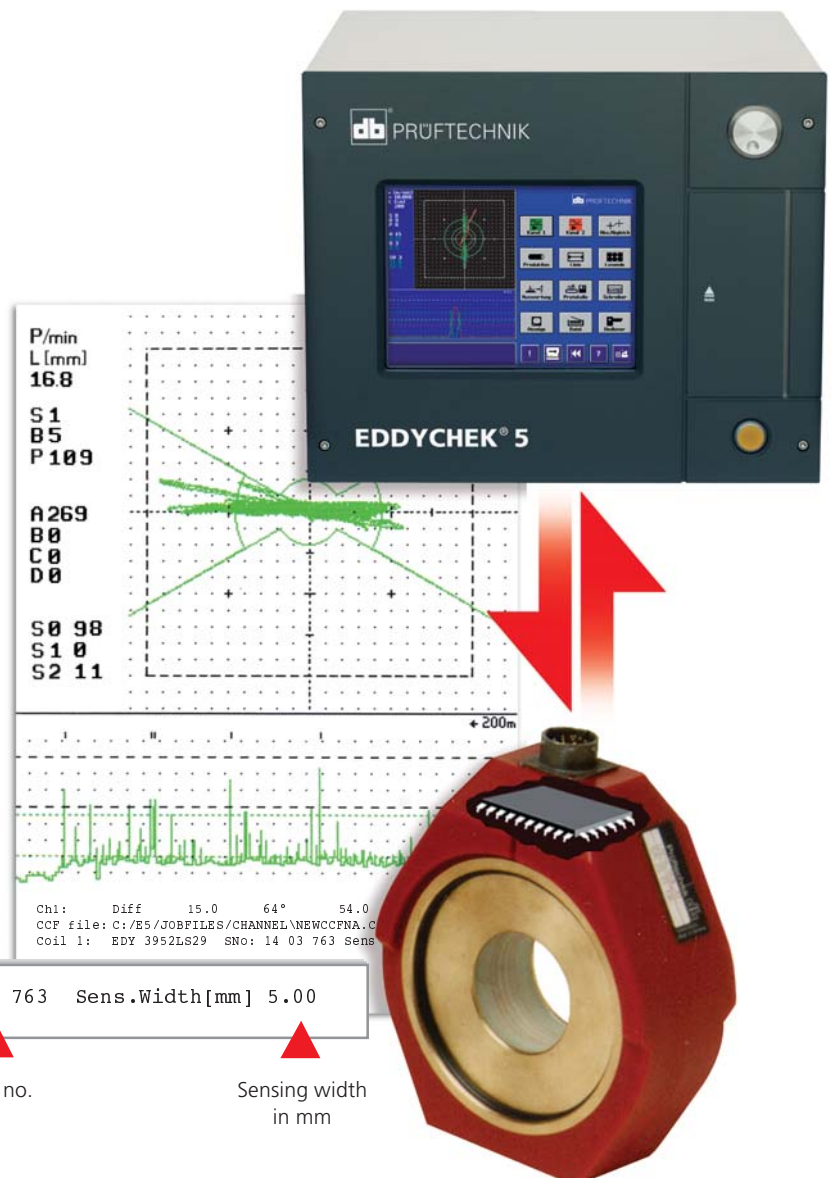
Comprehensive and verifiable quality control is of utmost importance in today's highly competitive marketplace. Firstly, this involves thorough documentation of the quality of the products. Just as important, however, is a record of the testing setup used to examine the products. After all, how else can you be sure that testing was effective?

Sensor identification

If you are testing with a smart sensor, every hardcopy will show:

- Sensor type
- Size
- Serial number
- Sensing width

The same information is written into the hardware list and into the test results.



Coil 1:	EDY 3952LS29	SNo: 14 03 763	Sens.Width[mm]	5.00
Channel no.	Type	Diameter in mm	Serial no.	Sensing width in mm

P/min
L [mm]
16.8

S1
B5
P109

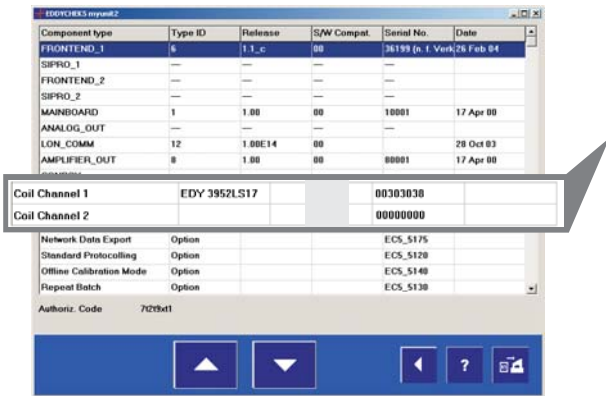
A269
B0
C0
D0

S0 98
S1 0
S2 11

+200m

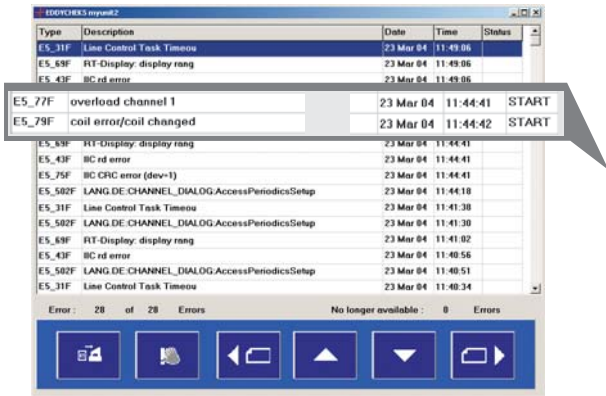
Ch1: Diff 15.0 64° 54.0
CCF file: C:/E5/JOBFILES/CHANNEL/NEWCCFNA.C
Coil 1: EDY 3952LS29 SNo: 14 03 763 Sens

Smart sensors for better quality control



Full documentation

A comprehensive, verifiable record of testing must include information on the type of sensor used. Smart sensors identify themselves to the EDDYCHEK® 5 with their sensor type, serial number, size and spacing. The data is written into the list of hardware components and stored in the testing data. It also appears in hard copies of the screen.



Continuous monitoring

The system continuously interrogates the sensor, giving you the assurance that the system is testing reliably. It will alert you if the sensor is disconnected or faulty. When a new sensor is connected, it will enter the new identification into the hardware components list and test result data together with the date and time of the exchange.



Automatic parameter setting

With smart sensors, the working width of the sensor is automatically read in and cannot be accidentally changed, letting you rest assured that the system is testing with the right setting.

Availability

This new feature is available for EDDYCHEK® 5, software version 3 or higher. Your PRÜFTECHNIK representative can advise on upgrades to your existing equipment.

ISO 9000 requirements

A major requirement of ISO 9000 is for full documentation of testing procedures and appliances. The new smart sensors help meet this stipulation.



Distributor:

Printed in Germany LAB 5604.03.04

EDDYCHEK® is a registered trademark of PRÜFTECHNIK Dieter Busch AG. No copying or reproduction of this information, in any form whatsoever, may be undertaken without express written permission of PRÜFTECHNIK AG. The information contained in this leaflet is subject to change without further notice due to the PRÜFTECHNIK policy of continuous product development.
© Copyright 2003 by PRÜFTECHNIK AG.

PRÜFTECHNIK NDT GmbH
Fischerfleck 8
D-85730 Ismaning, Germany
www.prueftechnik.com/ndt
Telephone: +49 (0)89 99 61 60
Telefax: +49 (0)89 96 79 90
eMail: info@prueftechnik.com

For reliable results in quality control